



VDS

VIDARR
PRODUCTS

VDS
SERVICES & SOLUTIONS

CAPABILITIES 2025



ON TIME

VDS

ON TARGET

ViDARR DEFENSE SOLUTIONS CAPABILITIES

WHO WE ARE

ViDARR and ViDARR Defense Solutions (VDS) operate under the same umbrella, offering comprehensive solutions for modern armed forces. ViDARR focuses on creating innovative, in-house products with the motto "Built for Battle." Meanwhile, VDS addresses contract needs with Build to Print solutions, Kitting, Facility Infrastructure, and Engineering services that are always "On Time, On Target". Both divisions dedicate themselves to providing cutting-edge technologies to meet the dynamic challenges faced by military forces today.

Why Choose Us



INNOVATIVE SOLUTIONS

We are committed to providing innovative solutions that will help create a better experience for you and your colleagues.



CUSTOMER CENTRIC

Our company puts customers first, always prioritizing your needs for exceptional service and satisfaction.



ASSURANCE GUARANTEE

We guarantee all of our products are Built for Battle quality and we offer seamless support to answer all your questions along the way of installation.

OUR SERVICES

SOURCING

We specialize in sourcing and providing an extensive range of obsolete parts. Whatever your needs may be, we have the capability to locate and deliver precisely what you require.

3PL WAREHOUSING

As 3PL leaders in the industry, we offer secure storage, streamlined order processing, and efficient shipping and receiving services for all your logistical needs.

ADDITIVE MANUFACTURING

We boast an extensive inventory of high-quality parts and possess the in-house capabilities to craft any item you seek. Plus, our efficiency allows us to do so in a fraction of the time compared to most large suppliers.

ENGINEERING

Our skilled engineers leverage cutting-edge technology to meticulously craft tailored solutions that meet your specific needs.

SYSTEM INTEGRATIONS

Engineered for excellence, our Systems and sensors offer superior surveillance and targeting capabilities, ensuring mission success under any conditions.





ON TIME

VDS

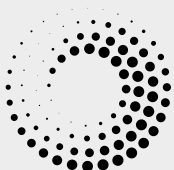
ON TARGET

SOURCING



EXPERTISE AND RELIABILITY

With years of industry experience, we understand the complexities of sourcing components. Our team is dedicated to ensuring that you receive high-quality parts that meet your precise specifications, backed by stringent quality control processes. You can trust us to deliver reliable solutions tailored to your needs.



SPEED AND FLEXIBILITY

In today's fast-paced market, time is critical. Our agile sourcing strategies enable us to provide quick turnaround times, adapting to your project timelines and fluctuating requirements. We prioritize flexibility, ensuring that we can scale our solutions to match your evolving needs.



PRECISION IN FINDING THE RIGHT PARTS

We specialize in helping you locate exactly what you need. Whether it's standard components or custom solutions, our extensive network and advanced search capabilities allow us to source the right parts efficiently. We take the guesswork out of the process, ensuring you get the perfect fit for your projects.

**FOR MORE
INFORMATION**



1-877-636-8432



Info@vidarrinc.com



www.ViDARRINC.com

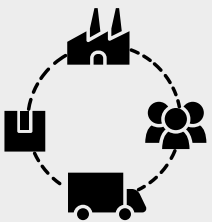


ON TIME

VDS

ON TARGET

3PL- STORAGE & LOGISTICS



SOURCING, WAREHOUSING & LOGISTICS

Sourcing, warehouse management, and logistics play pivotal roles in bolstering the operational efficiency of the US Military by ensuring a timely and reliable supply chain for critical resources. These interconnected functions are essential in sustaining the military's readiness, facilitating rapid deployment, and maintaining strategic advantage in dynamic and challenging operational environments.



3PL/KITTING SOLUTIONS

We provide individualized packaging, logistics support, and project management for your equipment challenges. We cover cradle-to-grave solutions from initial production, comprehensive testing and scalable production.



RELATIONSHIP & COMPLETION FOCUSED

Working to fill contract needs and following through on what we say. A small-business delivering integrated, combat-ready Solutions. Results with customer focused!

**FOR MORE
INFORMATION**



1-877-636-8432



Info@vidarrinc.com



www.ViDARRINC.com



ON TIME

VDS

ON TARGET

ADDITIVE MANUFACTURING



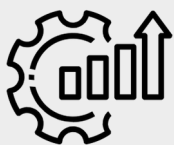
CUSTOM BUILDS

We specialize in custom builds, offering tailored solutions that meet specific project requirements. Our team collaborates closely with clients to design and fabricate unique products that align with their operational needs and objectives.



DIVERSE MACHINING AND REBUILDING CAPABILITIES INCLUDE:

We offer cradle-to-grave solutions, covering initial production, rigorous testing, and scalable full-scale production for optimal results. Our diverse capabilities include advanced 4 and 5-axis CNC machining, electric motor rewinding and rebuilding, and 3D printing in metal and plastic. This integrated approach allows us to efficiently tackle a wide range of manufacturing challenges, producing precise parts, extending the life of critical components, enabling rapid prototyping of custom designs and Reverse Engineering.



LRIP, TESTING, AND FULL SCALE PRODUCTION

We offer comprehensive cradle-to-grave solutions that encompass initial production, rigorous testing, and scalable full scale production. Our approach ensures quality and efficiency at every stage of the process.

**FOR MORE
INFORMATION**



1-877-636-8432



Info@vidarrinc.com



www.ViDARRINC.com

REVERSE ENGINEERING

Physical Model

Identify what it is exactly you're trying to reverse Engineer. Identify the target for reverse engineering, whether it's a process, hardware component, or software program.

3D Scan

If we have the Physical Model in hand we can start the process and conduct a 3D scan to get the exact parameters right around your set of requirements

Research

Gather all relevant information about the product, especially if the original is unavailable. This can include source code, hardware dimensions, manufacturing processes, or materials used.

Disassembly

Deconstruct the original product, whether physical or software. Label and store each piece in order for accurate reassembly. Aim for precision, even if some guesswork is involved.

Analyze

Examine each disassembled piece, noting design change suggestions and documenting any errors or flaws. Thoroughly document all findings.

Reassembly

Our skilled Engineers reassemble the product in reverse order of disassembly, ensuring every part is correctly placed to restore it to its original state.

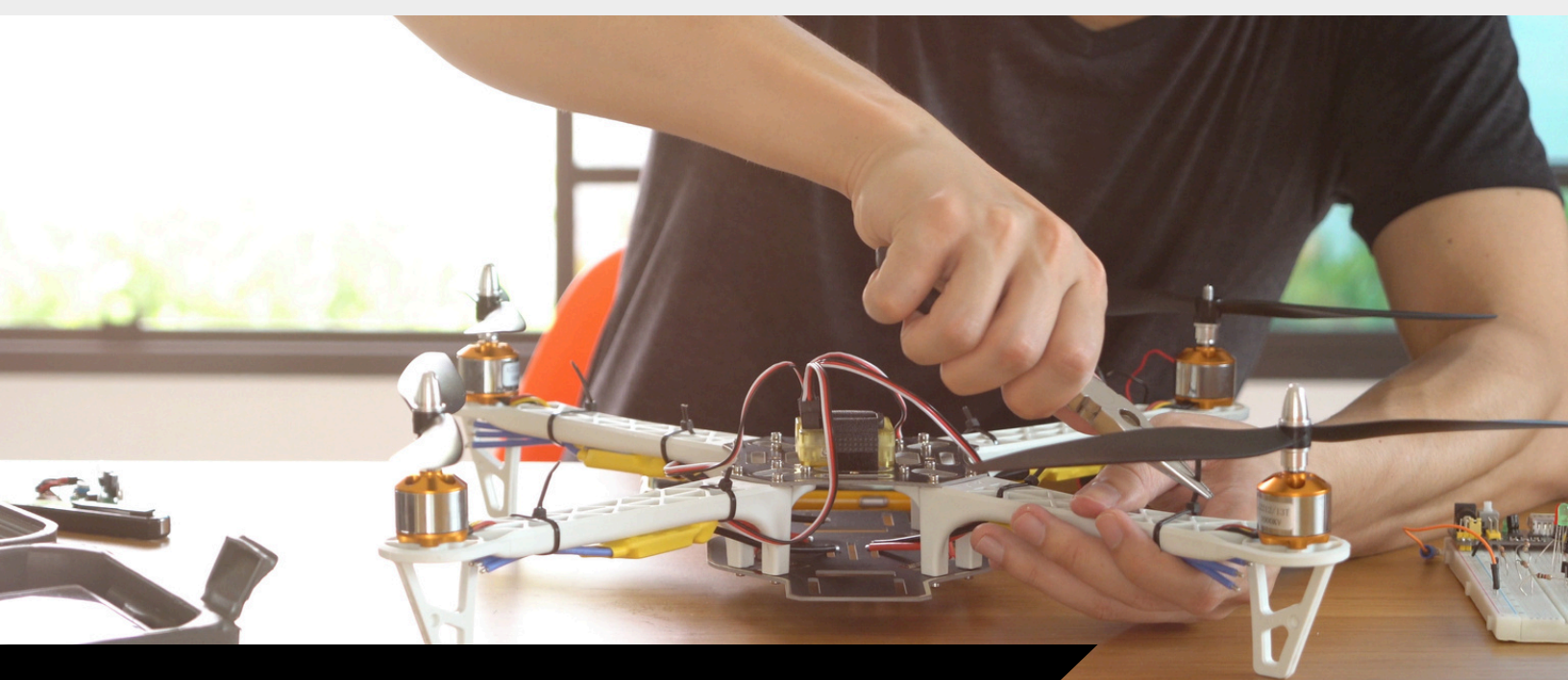
Creation

Last but not least comes creation, where our engineers can turn your dreams into reality. Implement design improvements or develop a new product version. Use the information gathered during reverse engineering as a blueprint for new designs and changes.

ON TIME

VDS

ON TARGET

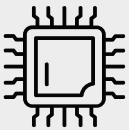


ON TIME

VDS

ON TARGET

ENGINEERING



ELECTRICAL ENGINEERING

Our electrical engineering services focus on designing and integrating reliable electrical systems. From circuit design to system integration, we ensure that all components work seamlessly together. We prioritize cutting-edge solutions to address current challenges while promoting sustainability and efficiency.



MECHANICAL ENGINEERING

In mechanical engineering, we specialize in product design, rapid prototyping, and part production. We adapt to the discontinuation of older parts by proactively managing and redesigning systems, ensuring compatibility and sustainability. Our approach enhances the lifespan and functionality of products, keeping clients competitive in their industries.



ADDITIVE MANUFACTURING

Additive manufacturing enables the creation of complex geometries and lightweight structures that traditional methods can't achieve. By building components layer by layer, we reduce waste and accelerate production, allowing for rapid iterations and customized parts tailored to unique specs.



MACHINING

Our machining capabilities include milling, turning, and grinding, allowing for precise and customized component production. These techniques ensure exact dimensions, optimal surface finishes, and tight tolerances, meeting the specific needs of various industries while maintaining high quality.

**FOR MORE
INFORMATION**



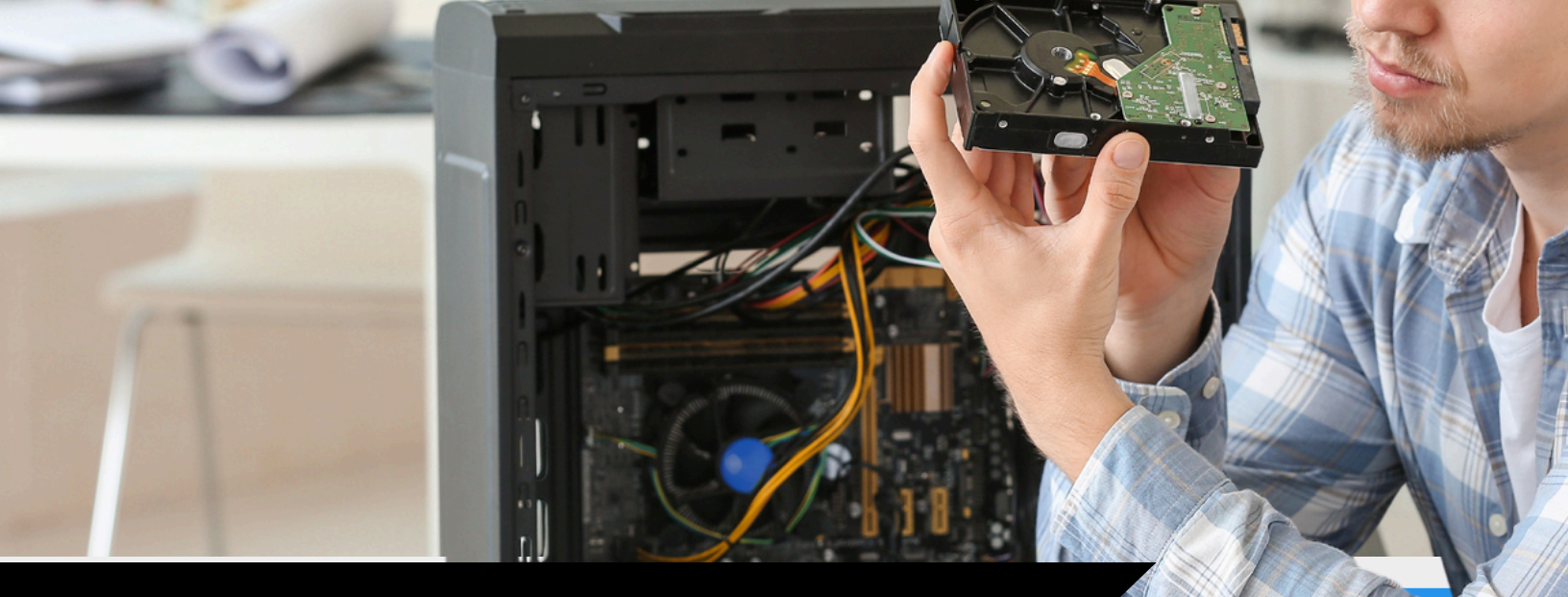
1-877-636-8432



Info@vidarrinc.com



www.ViDARRINC.com



ON TIME

VDS

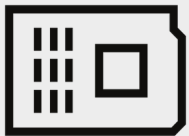
ON TARGET

SYSTEM INTEGRATION SERVICES



PRODUCT SOLUTIONS

Our hardware offerings include sensor hubs, interface modules, and connectivity solutions designed to facilitate the seamless physical integration of sensors onto various platforms. By providing a wide range of products, we empower military platforms to adapt to diverse scenarios, enabling forces to make informed decisions and respond effectively to rapidly changing environments.



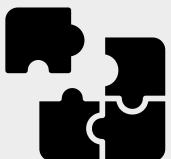
CUSTOM BOARDS & SENSORS

Our integrated sensor systems are engineered to significantly improve situational awareness, target detection, navigation, and overall operational effectiveness. By emphasizing a holistic approach to sensor integration, we enable a synergistic method of data gathering that supports more accurate and timely decision-making in real-time scenarios.



CUSTOM SENSORS

We specialize in designing and developing custom sensors tailored to specific mission requirements. These sensors are crafted to meet the unique challenges faced by military operations, ensuring optimal performance and reliability in diverse environments. By offering bespoke solutions, we enhance the capabilities of military platforms, allowing them to operate at peak effectiveness.



PLATFORM INTEGRATION

We focus on integrating advanced sensor systems into existing military platforms, enhancing their capabilities and ensuring they can meet the evolving demands of modern operations. Our platform integration solutions are tailored to create a cohesive environment where multiple sensors work together, providing enhanced situational awareness and operational readiness.

**FOR MORE
INFORMATION**



1-877-636-8432



Info@vidarrinc.com



www.ViDARRINC.com



COMPONENTS
& ACCESSORIES



NIGHT VISION



THERMAL VISION



DRONES



BUILT FOR BATTLE PRODUCTS

Hawk 25 [THERMAL]



Features	Hawk 320-25	Hawk 640-25
Detector	320x240 12um	640x480 12um
FoV [H x V]	8.8° (H) × 6.6° (V)	17.6° (H) × 13.2° (V)
Eye Relief	25 mm	
Memory	4 hours of video	
Size	175×71×87 mm (6.9×2.8×3.4 in)	
Weight	742 g	

Hawk 35 [THERMAL]



Features	Hawk 320-35	Hawk 640-35
Detector	320x240 12um	640x480 12um
FoV [H x V]	6.3° (H) × 4.7° (V)	12.6° (H) × 9.4° (V)
Eye Relief	25 mm	
Memory	4 hours of video	
Size	196×71×87 mm (7.7×2.8×3.4 in)	
Weight	782 g	

Hawk 50 [THERMAL]



Features	Hawk 320-50	Hawk 640-50
Detector	320x240 12um	640x480 12um
FoV [H x V]	4.4° (H) × 3.3° (V)	8.8° (H) × 6.6° (V)
Eye Relief	25 mm	
Memory	4 hours of video	
Size	197×71×87 mm (7.7×2.8×3.4 in)	
Weight	837 g	

Hawk 75 [THERMAL]



Features	Hawk 320-75	Hawk 640-75
Detector	320x240 12um	640x480 12um
FoV [H x V]	2.9° (H) × 2.2° (V)	5.9° (H) × 4.4° (V)
Eye Relief	25 mm	
Memory	4 hours of video	
Size	225×89×89 mm (8.6×3.5×3.5 in)	
Weight	1010 g	

V-19 [THERMAL]



Features	V19 320-19	V19 640-19
Detector	320x240 12um	640x480 12um
FoV [H x V]	11.6° (H) × 18.7° (V)	23.2° (H) × 17.4° (V)
Eye Relief	20 mm	
Memory	1.5 hours of video	
Size	114×63×70 mm (4.5×2.5×2.75 in)	
Weight	235 g	

V-14 [NVG]



Features	V19 - 14 / 19 mm	
Detector	20173-G Standard	20173-G Optimum
FoV [H x V]	40° (H) × 40° (V)	40° (H) × 40° (V)
Gain	30,000 sd/m2/lx	40,000 sd/m2/lx
Eye Relief	24 mm	
Size	110×51×57 mm (4.3×2.0×2.2 in)	
Weight	335 g	

V-25 [THERMAL]



Features	V25 320-25	V25 640-25
Detector	320x240 12um	640x480 12um
FoV [H x V]	8.8° (H) × 6.6° (V)	17.6° (H) × 13.2° (V)
Eye Relief	20 mm	
Memory	1.5 hours of video	
Size	175×71×87 mm (6.9×2.8×3.4 in)	
Weight	300 g	

V-35 [THERMAL]



Features	V35 320-35	V35 640-35
Detector	320x240 12um	640x480 12um
FoV [H x V]	6.3° (H) × 4.7° (V)	12.5° (H) × 9.4° (V)
Eye Relief	20 mm	
Memory	1.5 hours of video	
Size	175×71×87 mm (6.9×2.8×3.4 in)	
Weight	315 g	



B-35 Clip on [THERMAL]



Features ClipOn 320-35 | ClipOn 640-35

Detector	320x240 12um	640x480 12um
FoV [H x V]	6.3° (H) x 4.7° (V)	12.5° (H) x 9.4° (V)
Eye Relief	20 mm	
Memory	1.5 hours of video	
Size	175x71x87 mm (6.9x2.8x3.4 in)	
Weight	342 g	

NJ Fusion [NVG X THERMAL]



Features Fusion 320-09 | Fusion 640-19

Detector	320x240 12um	640x480 12um
FoV [H x V]	24.5° (H) x 18.3° (V)	23.2° (H) x 17.4° (V)
Eye Relief	25 mm	
Memory	1.5 hours of video	
Size	175x71x87 mm (6.9x2.8x3.4 in)	
Weight	442 g	

Laser1K - 1000/1800



Features Laser 1000 | Laser 1800

Range	5m to 1000m	5m to 1800m
Divergence	3 mrad	
Wavelength	905 nm	
Aperture	17 mm	
Size	119x48x55 mm (4.7x1.9x2.2 in)	
Weight	142 g	

Night Vision Intensifier Tubes



Features IR Tube Inverting/NI

Detector	20173-G Standard	20173-G Optimum
FoV [H x V]	40° (H) x 40° (V)	40° (H) x 40° (V)
Gain	30,000 sd/m2/lx	40,000 sd/m2/lx
Voltage	2 - 3.5 V	
Diameter	17.5 mm	
Weight	95 g	

(We also carry L3 and Elbit tubes as well)

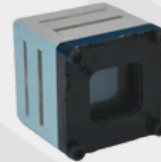
OW 320 [THERMAL CORE]



Features TV 320-00 | TV 320-09

Detector	320x240 12um	320x240 12um
FoV [H x V]	-	24.45° (H) x 18.34° (V)
Frame Rate	60 Hz	
Spectral Range	LWIR 8 µm - 14 µm	
Size	21x21x19 mm (0.8x0.8x0.75 in)	
Weight	12 g	

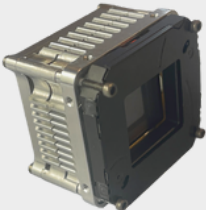
OW 640 [THERMAL CORE]



Features TV 640-00 | TV 640-19

Detector	640x480 12um	640x480 12um
FoV [H x V]	-	23.2° (H) x 17.4° (V)
Frame Rate	60 Hz	
Spectral Range	LWIR 8 µm - 14 µm	
Size	21x21x19 mm (0.8x0.8x0.75 in)	
Weight	12 g	

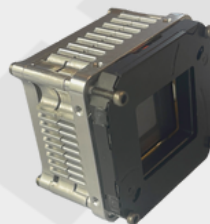
OW 1024 [THERMAL CORE]



Features OW 1024-00 | OW 1024-35

Detector	1024x980 12um	1024x980 12um
FoV [H x V]	-	20.1° (H) x 18.9° (V)
Frame Rate	60 Hz	
Spectral Range	LWIR 8 µm - 14 µm	
Size	36x38.7x25.8 mm (1.4x1.5x1.0 in)	
Weight	20 g	

OW 1280 [THERMAL CORE]



Features OW 1280-00 | OW 1280-50

Detector	1280 x 1024 12um	1280 x 1024 12um
FoV [H x V]	-	17.6° (H) x 14.1° (V)
Frame Rate	60 Hz	
Spectral Range	LWIR 8 µm - 14 µm	
Size	36x38.7x25.8 mm (1.4x1.5x1.0 in)	
Weight	22 g	

Tanto [NVG]



- Material: Impact Resistant Polymer
- Tube Type: 18mm MX-10160, 18mm MX-11769 style with EGA pigtail removed
- IR Illuminator: No
- Housing Weight: 1.87 oz/0.12 lbs/53g
- Device Weight: STANDARD (9.74 oz/0.61 lbs/53 g)
- LIGHTWEIGHT (7.52 oz / 0.47 lbs / 213 g)
- Ingress Rating: Exceeds IP-68, and MIL-STD-810H
- Finish: H- Series Cerakote (Matte Black, Coyote, and OD)
- On-Board Power: CR123A onboard with a runtime of 40+ Hours
- Out-Board Power: No
- Manual Gain Control: No

Chimera [NVG]



- Material: Impact-Resistant Nylon 11
- Tube Type: 3 contact pad style 18mm MX-11769, 18mm MX-11769 style with EGAC pigtail removed and replaced with adapter, or MX-10160 with loss of manual gain
- IR Illuminator: Dependent upon bridge
- Manual Gain Control: Dependent upon bridge
- Housing Weight: 1.83 oz / 0.11 lbs / 52 g
- System Weight: STANDARD: 27.1 oz / 1.69 lbs / 768.3 g
- Ingress Rating: Exceeds IP-68 and MIL-STD-810H
- Finish: H-Series Cerakote (Matte Black, Coyote, OD Green)
- On-Board Power: Single CR123A onboard with a runtime of ~12 hours, up to ~48 hours with a battery pack (Optional LEMO port*)

PRODUCTION STARTS MAY OF 2025

Talon [NVG]



- Material: Ultralight Injection Molded Polymer
- Tube Type: Standard EGAC MX-11769 and 3-pad MX-11769 Image Intensifier Tubes (No modification required)
- IR Illuminator: Yes (Activated by double-tapping the single control knob with adjustable brightness and an in-view IR Illuminator indicator)
- Housing Weight: 53g (CR123A configuration, 50% lighter than a standard PVS-14 housing)
- Device Weight: Not specified
- Ingress Rating: Exceeds IP-68 and MIL-STD-810H
- Finish: H-Series Cerakote (Matte Black, Coyote, and OD Green)
- On-Board Power: CR123A battery standard (with runtime of 40+ hours), optional AA and CR2 caps available
- Out-Board Power: No
- Manual Gain Control: Yes (Tactile detented rotation on a single ergonomic control knob)

Raptor [NVG]



- Material: Impact Resistant Polymer
- Tube Type: Standard EGAC MX-11769 and 3-pad MX-11769 Image Intensifier Tubes
- IR Illuminator: Yes (Activated by double-tapping the single control knob, with adjustable brightness)
- Housing Weight: Not specified
- Device Weight: Not specified
- Ingress Rating: Exceeds IP-68 and MIL-STD-810H
- Finish: H-Series Cerakote (Matte Black, Coyote, and OD Green)
- On-Board Power: CR123A battery with a runtime of 40+ hours
- Out-Board Power: 00B LEMO power port included
- Manual Gain Control: Yes (Single ergonomic control knob for power and gain adjustment)
- Interchangeable image tube pod with Talon/Talon-R models



Manticore [NIGHT VISION]



- Material: High strength hybrid fiber reinforced injection molded polymer
- Tube Type: 3 contact pad style 18mm MX-11769, 18mm MX-11769 style with EGA pigtail removed, and replaced with adapter, or MX-10160 with loss of manual gain
- IR Illuminator: Yes
- Individual Pod on/off: Yes, individually
- Housing Weight: 4.40 oz/0.27 lbs/125g
- Device Weight: STANDARD (18.02 oz/1.12lbs/511g)
- LIGHTWEIGHT (14.74oz/92lbs/418g)
- Ingress Rating: Exceeds IP-68, and MIL-STD-810H
- Finish: H- Series Cerakote (Matte Black, Coyote, and OD Green)
- On-Board Power: CR123A onboard with a runtime of ~25 hours
- Out-Board Power: Optional LEMO port
- Manual Gain Control: Yes, digital tactical push buttons

Katana [NIGHT VISION]



- Material: Impact resistant Nylon 11
- Tube Type: 18mm MX-10160 style I
- Individual Pod on/off: Yes, individually
- Housing Weight: 4.33 oz/0.27 lbs/123g
- Device Weight: STANDARD (17.81oz/1.13lbs/505g)
- LIGHTWEIGHT (14.55 oz/90lb/412.6g)
- Ingress Rating: Exceeds IP-68, and MIL-STD-810H
- Finish: H- Series Cerakote (Matte Black, Coyote, and OD Green)
- On-Board Power: CR123A onboard with a runtime of ~25 hours
- Out-Board Power: Optional extended run battery pack

Samurai [NIGHT VISION]



- Material(s): High strength hybrid fiber reinforced injection molded polymer, CNC machined 6061-T6 aerospace grade aluminum, aerospace Grade 4 Titanium
- Finish: H- Series Cerakote (Matte Black, Coyote, and OD)
- Tube Type: 3 contact pad style 18mm MX-11769, 18mm MX-11769 style with EGAC pigtail removed and replaced with adapter, or MX-10160 with loss of manual gain
- IR Illuminator: Yes
- Individual Pod on/off: Yes, individually
- Housing Weight: 3.35 oz. / 0.21 lbs / 95 g

- Device Weight Standard: 16.96 oz. / 1.06 lbs / 481 g (Mil-Spec PVS-14 lenses and Photonis Image Intensifiers)
- Device Weight Lightweight: 13.68 oz. / 0.85 lbs / 388 g (RPO 3.0 PVS-14 lenses and Photonis Image Intensifiers)
- Control Pack Weight: AA: 6.06 oz. / 0.38 lbs / 172 g, CR123A: 4.05 oz. / 0.25 lbs / 114 g (With respective batteries installed)
- On-Board Power: No
- Out-Board Power: 2x CR123A 50+ hours / 4x Lithium AA 60+ hours
- Manual Gain Control: Yes, Analog switch/rotary controls or digital tactile control buttons
- Ingress Rating: Exceeds IP-68, and MIL-STD-810H

Tanto Daisho Bridge



- Upgrade your Nocturn Industries "Tanto" monoculars with the TAPB (Tanto Articulating Powered Bridge) "Daisho" and transform them into a lightweight, high-performance binocular system.
- Compatible with PVS-14 style J-Arms for quick transition back to two monoculars.

Various Night Vision Cables



- Fischer 4-pin to LEMO 4-pin cable
- LEMO 08 Male-Female 4 Pin 12" extension
- 4-pin Fischer to 2-pin LEMO 00b cable
- 4-pin Fischer to 4-pin Fischer cable

Panned Tanto Daisho Bridge



- Upgrade your Nocturn Industries "Tanto" monoculars with the TAPB (Tanto Articulating Powered Bridge) "Daisho" and transform them into a panned lightweight, high-performance binocular system.
- Compatible with PVS-14 style J-Arms for quick transition back to two monoculars.

Gun Damp



- Dry + Absorption + Metal + Penetrant = DAMP
- MADE IN THE USA
- Ensures peak performance with best gun lubricant
- Dual-action: gun oil and protectant in one
- Top-tier gun lubricator for all firearms
- Trusted military-grade formula with optimal viscosity
- Available in multiple form factors:
0.25 Oz Packets
1 Oz Metal Needle dropper
4 Oz Bottle
1 Gallon Field Jug
(Spray and wipes coming soon)

Chimera Bridge



- The PANO Bridge is a patent-pending upgrade for quad-tube NVGs, offering a sleeker, balanced design that reduces neck strain and enhances usability. Compatible with L3 Harris GPNVG18, Lindu QTNVG, and ANVIS10.
- Over 90+ degree field of View



Fully Modular UAV

All of our Unmanned Systems are broken into modular components. You'll be able to fully customize your Drone at ViDARR, module by module, to serve your unique mission criteria with a fully USA made and NDAA compliant solution.

- 3 Inch: Ideal for close quarter mission indoor and breaching purposes.
- 5 Inch: Your all in one size frame, this model can be manipulated in many ways for whatever purpose you intend to build it for. (LIGHTWEIGHT SENSORS / Payload)
- 7 inch: Similarly to the 5 inch model with many purposes but that extra strength of a large frame to give you more stability in flight. (Medium weight SENSORS / Payload)
- Hex Drone: Our six motor drone capable of carrying the heaviest payload capacity we offer. (up to 13 Lbs)
- Fully Customizable sizing options based on your mission's criteria. Anywhere from 2.5-9 inches or C-UAS / Interceptor capabilities.

External NVG Battery Pack



- The Bat Pack offers extended auxiliary power for your binocular device, utilizing four CR123A batteries to deliver a total runtime of up to 96 hours.
- Equipped with a power switch, it allows seamless switching between two independent power banks, each holding two CR123A batteries. Featuring a Fischer 4-pin port on the side
- Can also be used a counter weight for NVG.

**FOR MORE
INFORMATION**



1-877-636-8432



Info@vidarrinc.com



www.ViDARRINC.com

ON TIME

VDS

ON TARGET



ViDARR
BUILT FOR BATTLE

THANK YOU



At ViDARR Inc we make your missions success our priority. We appreciate your continued trust and partnership in advancing your mission requirements. Together, we are driving innovation and delivering solutions built for the battlefield. Thank you for choosing ViDARR to support your mission, we're proud to stand with you to create Built for Battle Products and services that are On Time, On Target.

**FOR MORE
INFORMATION**



1-877-636-8432



Info@vidarrinc.com



www.ViDARRINC.com